



3/2 Keppel Street Meridan Plains QLD

2  2  1 

This pristine contemporary townhouse in the Creekwood Central complex offers low maintenance living in sought-after Meridan Plains; in close proximity to fabulous parks, Meridan State College, ALDI, and with quick easy access to major arterial routes.

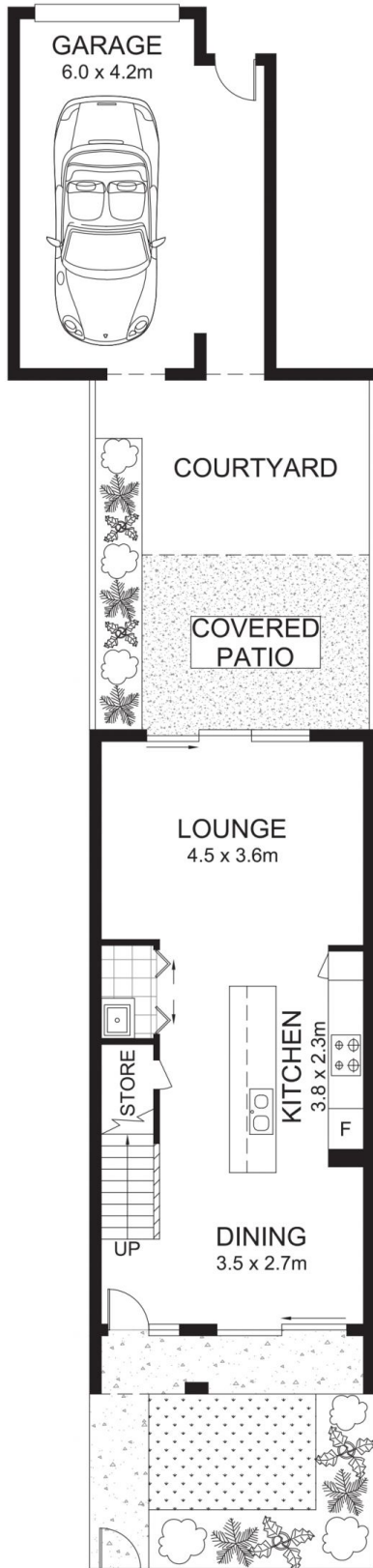
North facing, the townhouse is filled with natural light and cooling breezes; complete with two bedrooms, two bathrooms, expansive open plan living with elegant central kitchen, delightful front grassy courtyard at entrance, private rear patio plus courtyard, separate laundry, and single lock up garage - it is the perfect size for a single/couple either entering the market for the first time, or sea-changing downsizers seeking the simple life.

Type : Townhouse
Land Size : 168 sqm
View : <https://www.harvestinggroup.com.au/8290259>

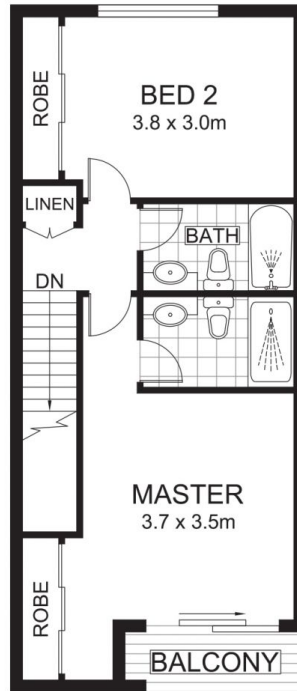


Shannon Turner
0479 164 261

[For full version visit the website](https://www.harvestinggroup.com.au)



GROUND FLOOR



FIRST FLOOR



(Floor Plan For Illustrative Purposes Only)

Scale In metres. We give no guarantee, warranty or representation as to the accuracy and completeness of the floor plan. We recommend that you instruct your own surveyor to carry out an independent investigation of the property prior to relying on the accuracy and completeness of this plan. **Floor Plan presented by The Floor Plan Specialist. www.thefpspecialist.com.au**

APPROXIMATE AREAS
 INTERNAL : 92 m²
 EXTERNAL : 19 m²
 GARAGE : 24 m²
TOTAL AREA : 135 m²



Unit 3/2 Keppel Street, Meridan Plains