



6 Steiner Crescent Caloundra West QLD

3  2  2 

This 'near new' contemporary home in popular Baringa, just a short stroll to local schools and fabulous parks/playgrounds, offers family-friendly living in one of the most exciting emerging communities in Queensland - master-planned and destined for great things!

Across a single level, facilitating easy care living for all ages and stages of life; it comprises three bedrooms, built-in study, two bathrooms, open plan living and dining flowing to covered north-facing alfresco, central kitchen, and double lock up garage, on a fenced low maintenance 320m2.

Raked ceilings in lounge and kitchen, split system air-conditioning in master bedroom and living, ceiling fans,

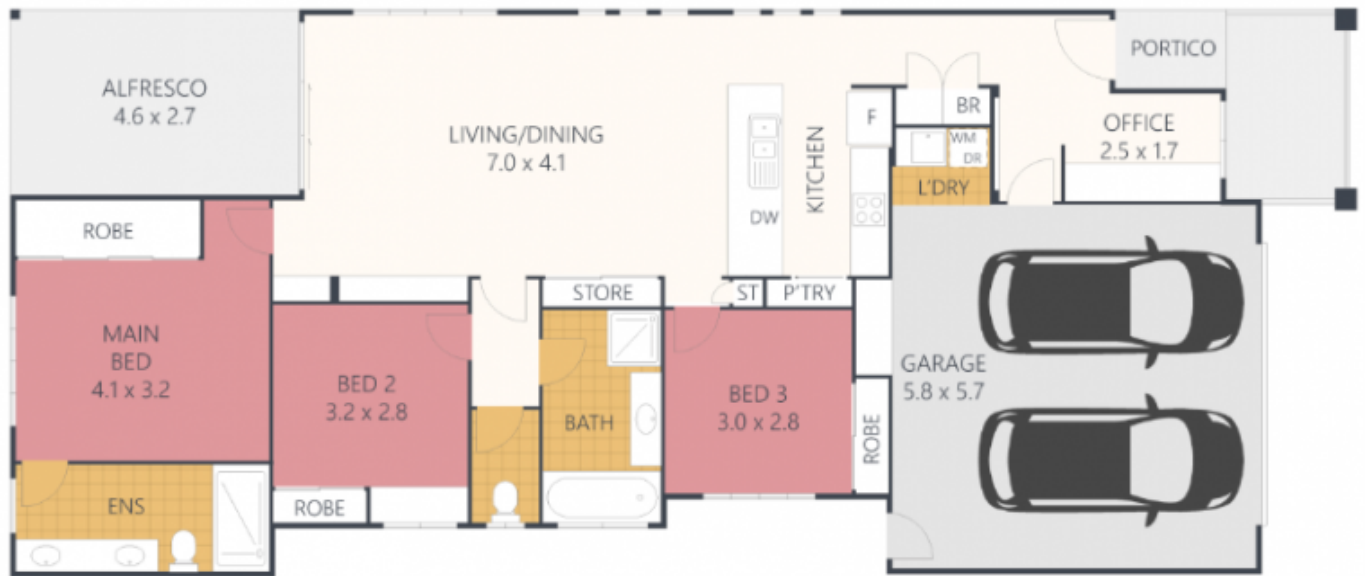
[For full version visit the website](https://www.harvestinggroup.com.au)

Type : House
Price : \$ 591,000
Building Size : 170.2 sqm
Land Size : 320 sqm
View : <https://www.harvestinggroup.com.au/8290234>



Shannon Turner
0479 164 261

6 Steiner Crescent, **BARINGA**



INTERNAL: 155m² EXTERNAL: 19m² TOTAL: 174m²

ARTIST'S IMPRESSION ONLY: While every attempt has been made to ensure the accuracy of this floor plan's areas and measurements of doors, windows, rooms and all other items are approximate and no responsibility is taken for any error, omission, or mis-statement. This plan is for illustrative purposes only and should only be used as such by any prospective purchaser. Floor plan by: www.realestatefloorplans.com.au

