



71 Elof Road Caboolture QLD

4  1  1 

This classic style lowset brick and tile home offers comfortable, family-friendly living on the northern side of Caboolture approximately a five-minute drive to CBD and rail, and within walking distance to local schools, parks, bus, and shops.

Across a single level to facilitate easy-care living and good functionality; the home comprises four bedrooms, 2-way bathroom, separate toilet, two separate living areas, central kitchen, expansive full-length north-facing verandah at rear, and single lock up garage plus onsite parking.

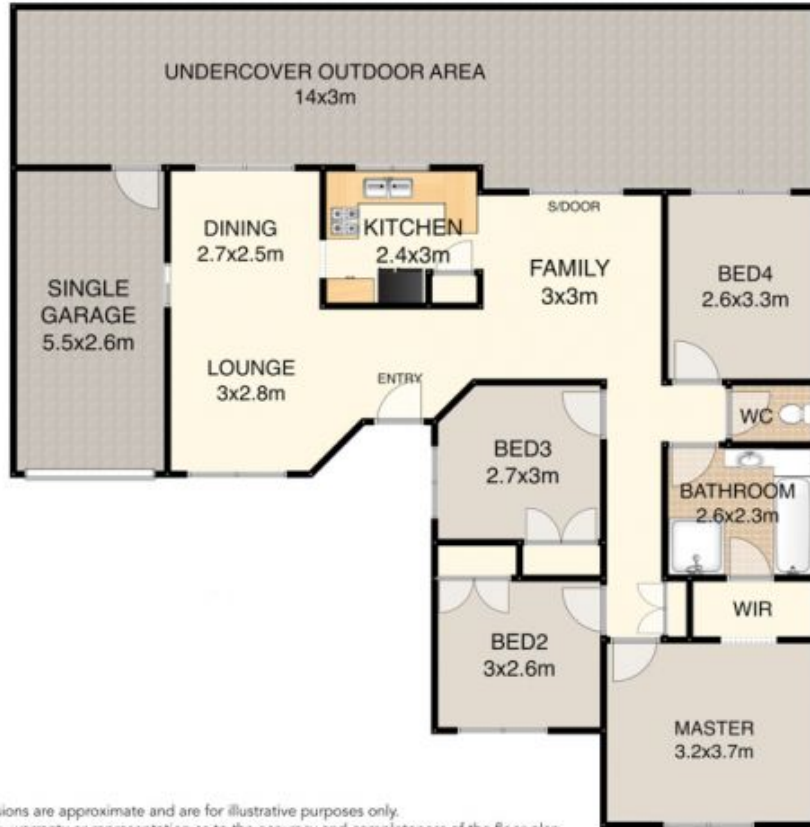
Security screen doors, ceiling fans throughout, separate bath and shower, gated side access, and lock up garden shed are existing features; in mostly original condition there

Type : House
Land Size : 647 sqm
View : <https://www.harvestinggroup.com.au/8290232>



Shannon Turner
0479 164 261

[For full version visit the website](https://www.harvestinggroup.com.au)



Floor plan, measurements and dimensions are approximate and are for illustrative purposes only.
Pixmo Productions gives no guarantee, warranty or representation as to the accuracy and completeness of the floor plan.

FLOOR PLAN:
71 ELOF ROAD - CABOOLTURE

APPROXIMATE UNDER ROOF SPACE = 148m²